

SNOHOMISH



CONSERVATION DISTRICT

# Kristoferson Creek Fish Passage Improvements Project



SNOHOMISH



CONSERVATION DISTRICT

# Who We Are

- Work with municipalities and private landowners
- Serve in a non-regulatory capacity
- Provide technical and financial assistance to conserve natural resources
- Implement on-the-ground projects
- Engage stewards, volunteers and communities



# Core Programs

- Farm Planning and Agricultural Assistance
- Residential Stewardship
- Habitat Improvement
- Education and Outreach





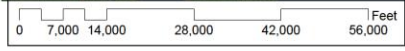
# Fish Passage Barriers



“Boldt 2” decision in 2007



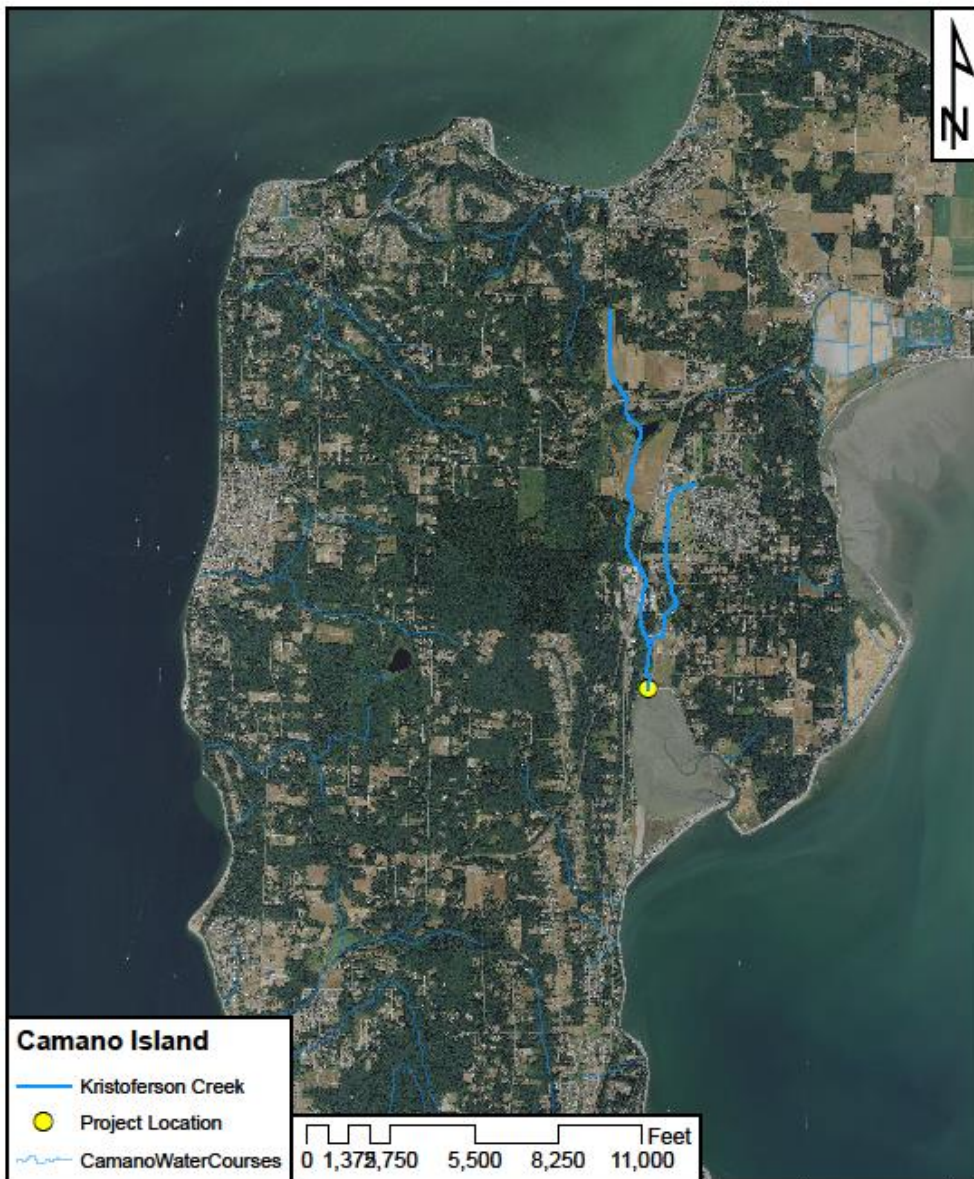
- Project Details**
- Russell Culvert
  - Barnum Culvert
  - River Deltas
  - Fish-Bearing Waterway
  - Port Susan Migration Zone



1 inch = 6,352 feet

## Kristoferson Creek Fish Passage Barrier Improvements Project Fish Migration Zonal Map

map created KM 2-16-14  
last modified AG 6-7-17



### Kristoferson Creek Fish Passage Barrier Correction Project Vicinity Map





# Barriers on lower Kristoferson Creek





# General Site History

- 1999: discussions begin
- 2003: road vacation hearing and SCD grant-funded project
- 2007 - 2016: Culvert case (WSDOT – replace all barriers by 2030)
- 2007: Adopt A Stream barrier assessment
- 2007/08: SCD applies for funding
- 2013: Whidbey Basin Small Streams Report
- 2014: SCD re-applies for funding – alternate
- 2014: Kristoferson Farm completes fish passage barrier corrections on private land
- 2015: SCD re-applies (again) for funding – awarded
- 2018: Implementation
- 2019 – 2022: Final barrier removed...





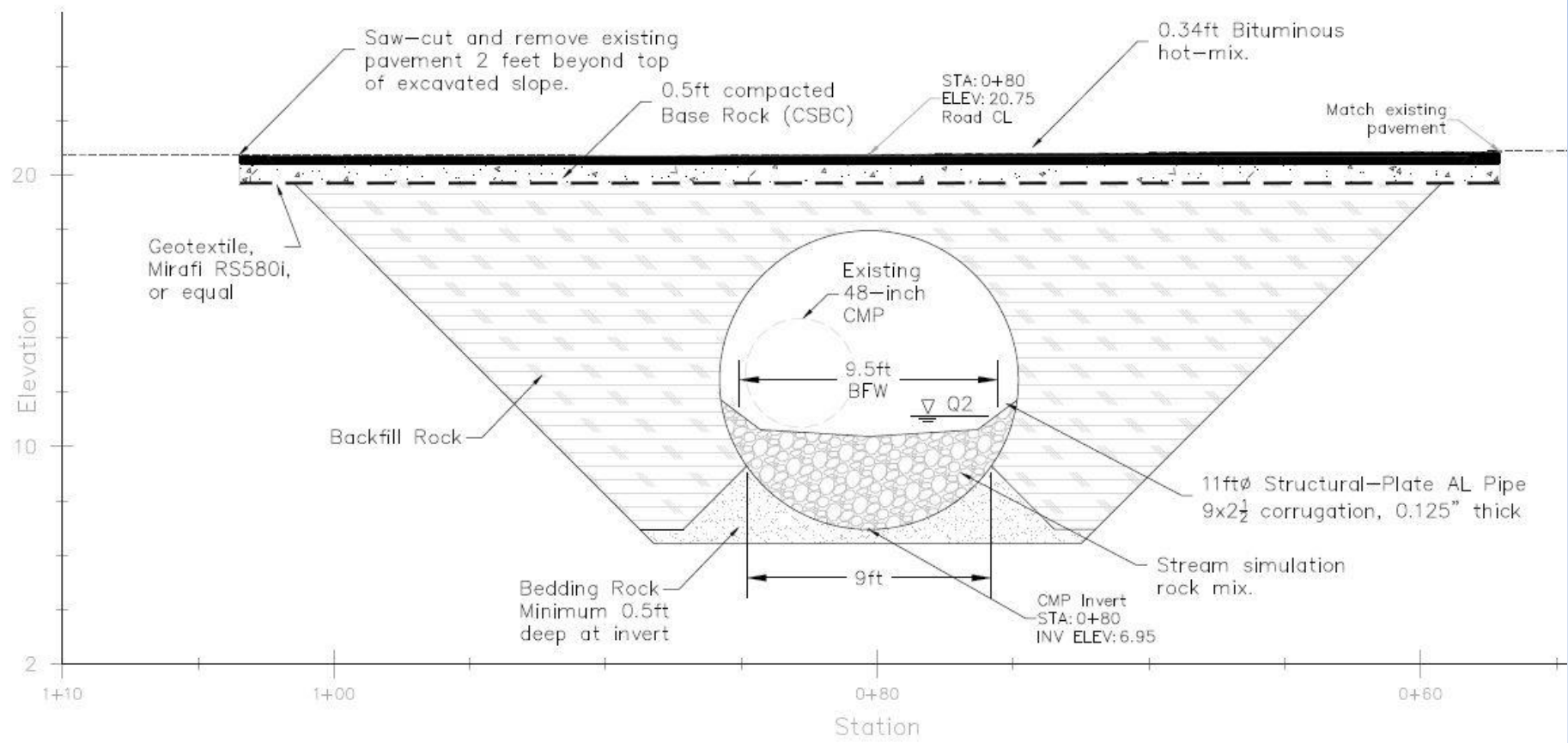


# Russell Rd. (upper site)





# Russell Road



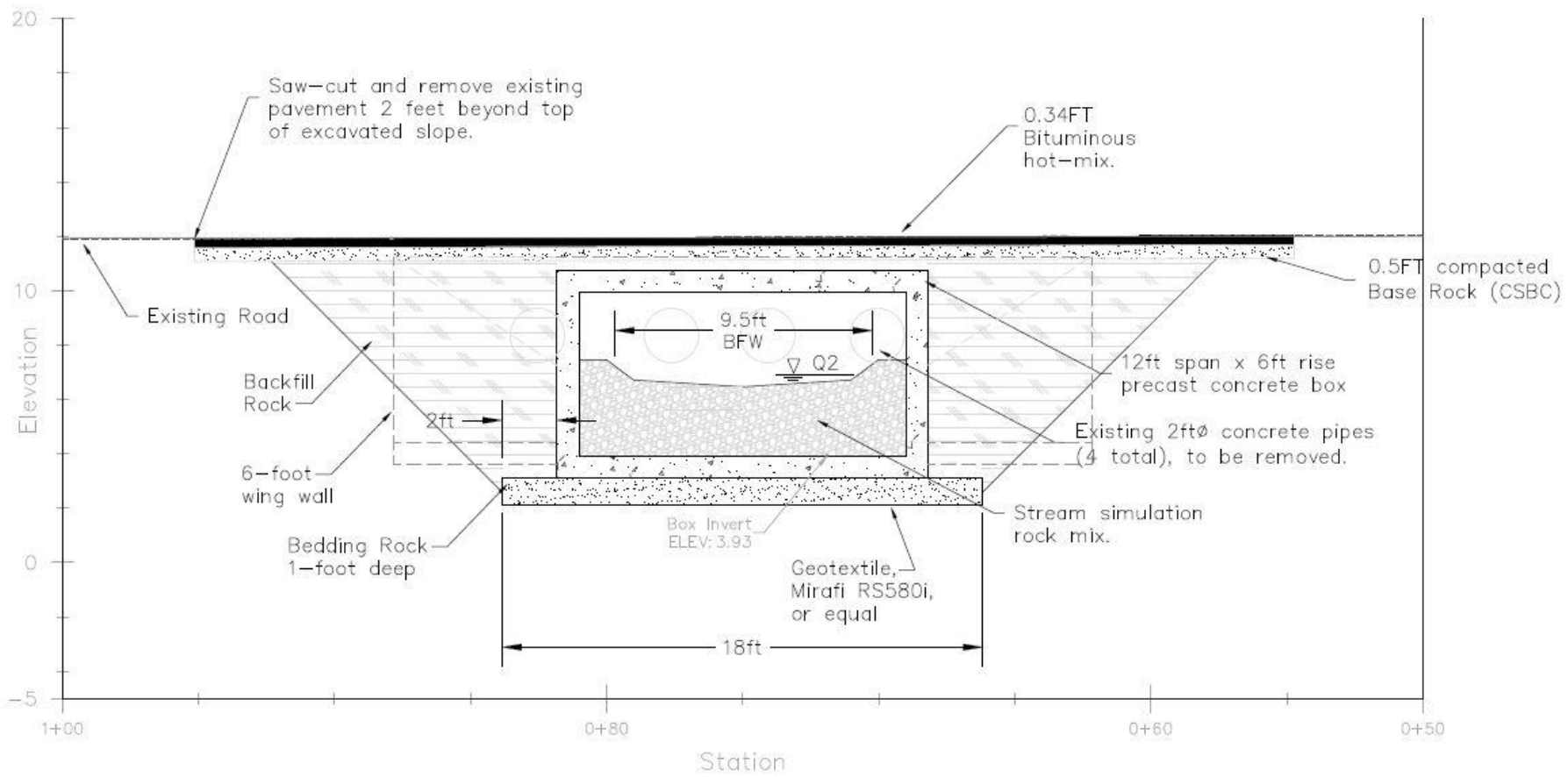


# Triangle Bay/Barnum Road (lower site)





# Triangle Bay Rd./Barnum Road



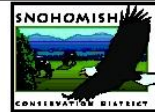


# Triangle Bay/Barnum Rd. closure



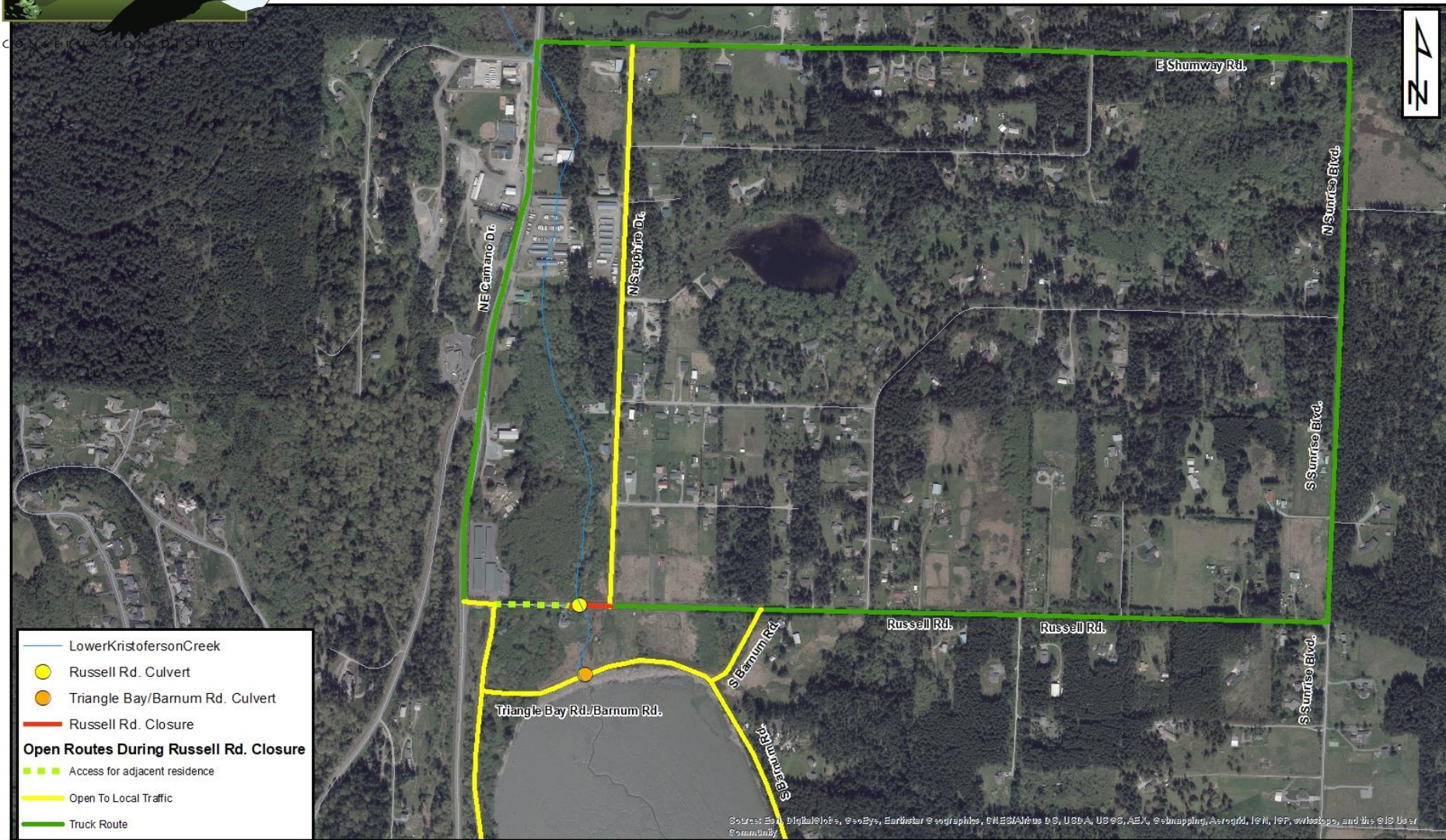
Kristoferson Creek Fish Passage Barrier Improvements Project  
Detour Routes for Triangle Bay/Barnum Road Closure

map created KM 2-16-14  
last modified KM 7-24-18





# Russell Road closure



Kristoferson Creek Fish Passage Barrier Improvements Project  
Detour Routes for Russell Road Closure

map created KM 2-16-14  
last modified KM 7-24-18

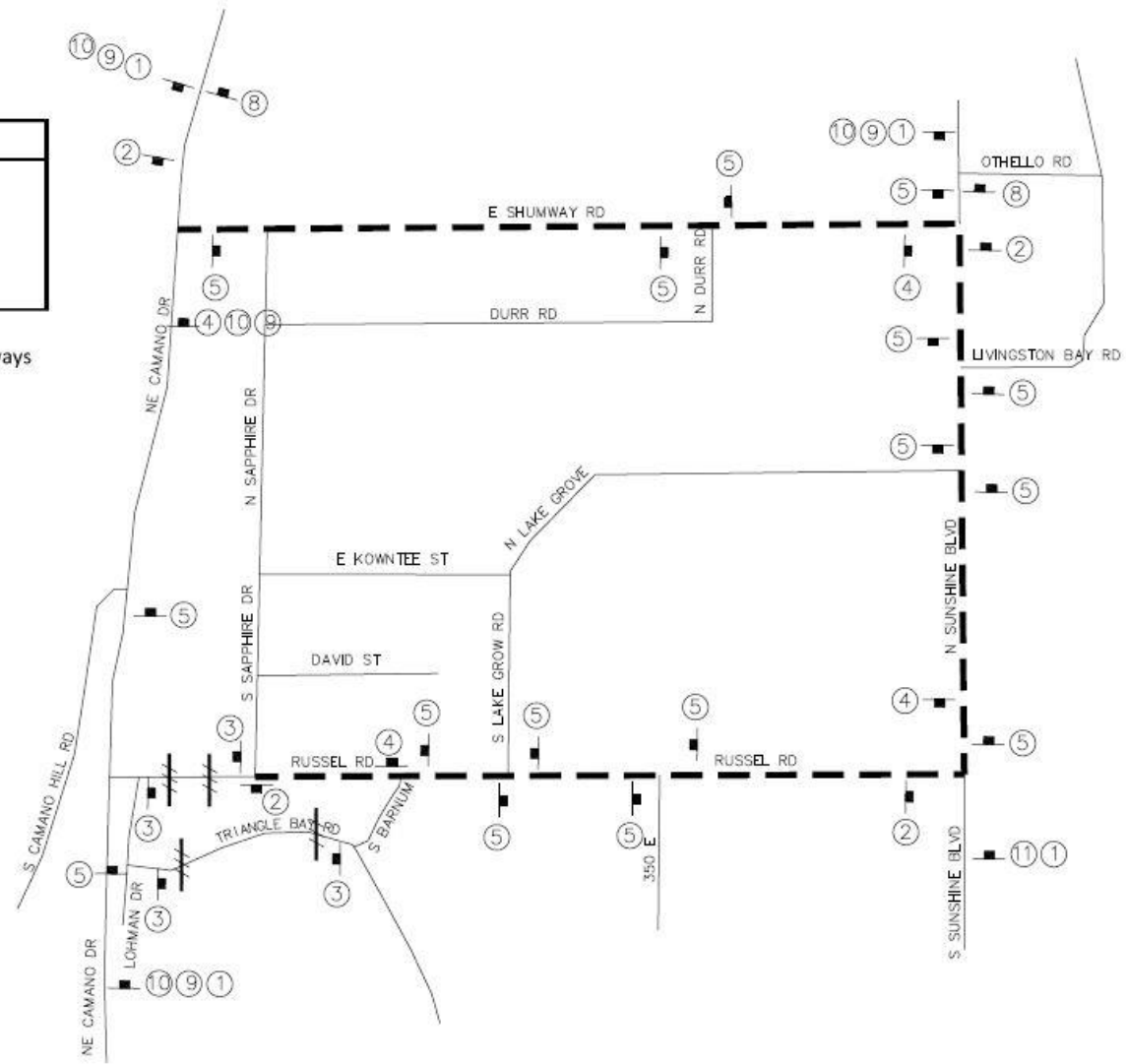




SIGN SPACING		
RURAL HIGHWAYS	60/65 MPH	800'
RURAL ROADS	45/55 MPH	500'
RURAL ROADS/URBAN ARTERIALS	35/40 MPH	350'
RESIDENTIAL/BUSINESS DISTRICTS	25/30	200'
URBAN STREETS	25 MPH OR LESS	100'

- (1) Spacing may be adjusted to accommodate intersections and driveways
- (2) Spacing may be reduced to fit roadway conditions
- (3) Regulatory traffic control devices shall be modified as needed

Sign Legend	SIGN DESIGNATION	Message	Dimensions (inches)	Quantity (Each)
1	W20-2	DETOUR AHEAD	48 x 48	4
2	M4-9L	DETOUR ARROW LEFT	48 x 36	4
3	R11-2	ROAD CLOSED	48 x 30	4
4	M4-9R	DETOUR ARROW RIGHT	48 x 36	4
5	M4-9	DETOUR ARROW UP	48 x 36	16
8	M4-8A	END DETOUR	24 x 18	2
9	D3-101	RUSSEL ROAD	12 x 36	3
10	D3-101	TRIANGLE BAY ROAD	12 x 36	3
11	D3-101	NE CAMANO DR	12 x 36	1



LEGEND

- (X) New Sign
- Post Mounted
- /// TYPE III Barricade
- Detour Route





# Tentative Construction Timeline

- Tentative construction start date: Tuesday, September 4<sup>th</sup>
  - Contractor will likely begin with the Triangle Bay Rd./Barnum Rd. crossing
  - Work on each culvert is expected to take up to two weeks, but each road closure may not last the full two weeks
  - Triangle Bay Rd./Barnum Rd. **tentative** closure: Tuesday, Sept. 4<sup>th</sup> – Friday, Sept. 14<sup>th</sup>
  - Russell Rd. **tentative** closure: Monday, Sept. 17<sup>th</sup> – Friday, Sept. 28<sup>th</sup>
- Tentative construction end date (substantial completion date): October 1<sup>st</sup>, 2018





Photo by Contech Engineered Solutions



Photo by Contech Engineered Solutions



# Project Benefits

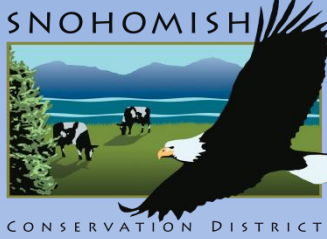


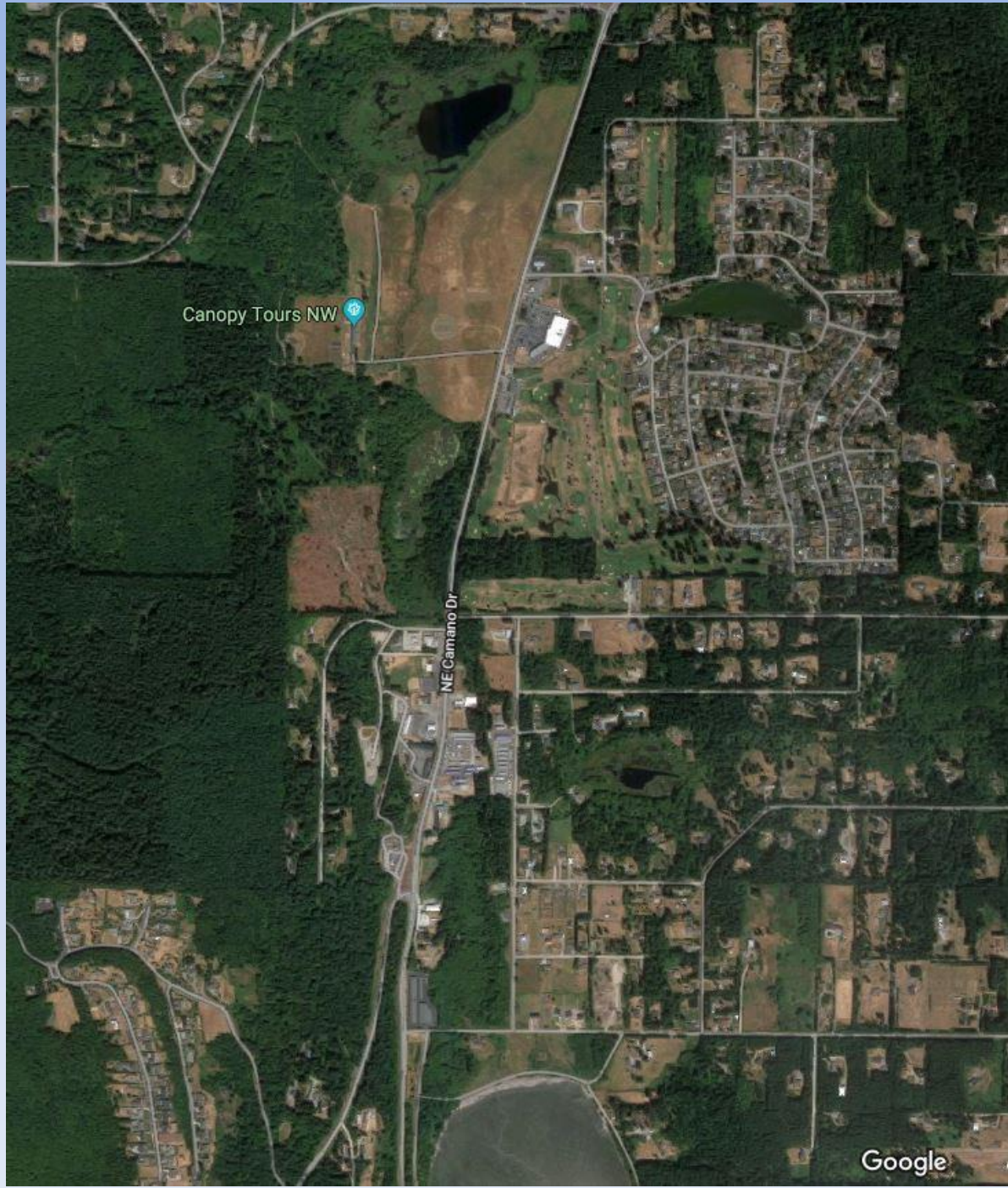


# Project benefits

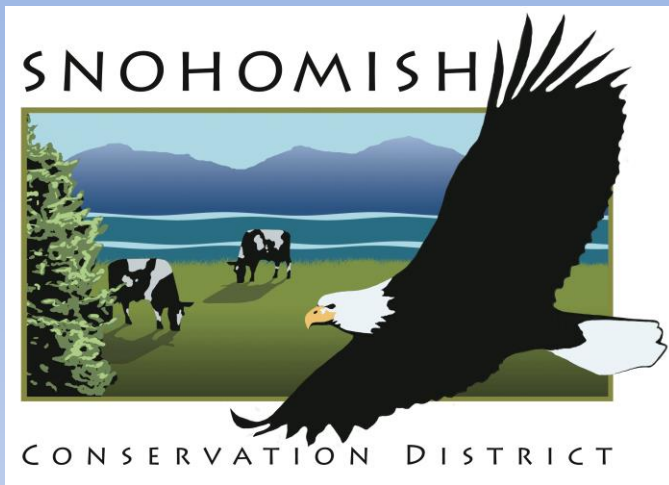


Photos by Barbara Brock,  
Winter 2006









**Kristin Marshall**  
**Senior Habitat Restoration**  
**Specialist**

**425-377-7017**

**[kristin@snohomishcd.org](mailto:kristin@snohomishcd.org)**

**[www.snohomishcd.org](http://www.snohomishcd.org)**



**Nick Tuttle, Engineer**  
**Construction Engineer**  
**Island County Public Works**

**360-679-7331**

**[n.tuttle@co.island.wa.us](mailto:n.tuttle@co.island.wa.us)**

**[www.islandcountywa.gov](http://www.islandcountywa.gov)**

**<http://snohomishcd.org/kristoferson-creek-fish-passage-barrier-improvements-process>**

# Too Many Supporters to Thank...



*This project has been funded wholly or in part by the United States Environmental Protection Agency under assistance agreement PC-01J22301 through the Washington Department of Fish and Wildlife. The contents of this document do not necessarily reflect the views and policies of the Environmental Protection Agency or the Washington Department of Fish and Wildlife, nor does mention of trade names or commercial products constitute endorsement or recommendation for use. Additional funding provided by US Fish and Wildlife Service and Washington State Recreation and Conservation Office Salmon Recovery Funding Board.*



# Project Budget

- Total Project Cost: \$368,500
  - SRFB: \$265,000
  - USFWS: \$35,000
  - WA State Conservation Commission: \$43,000
  - EPA – Puget Sound Partnership NTA through the Island LIO: \$25,500